

# QLA-60EBP-10



AUTO ACQUISITION ANTENNA POSITIONER FOR MILLIMETER WAVE LINE OF SIGHT



The QLA-60EBP-10 is a Power Over Ethernet (PoE) antenna positioner designed from the ground up to point and automatically peak directional side arm mount antennas for millimeter wave 70–90GHz (E-Band) links.

E-Band systems have very narrow beam widths which require very precise pointing and stable masts to maintain a high quality link. Often these links come out of alignment or become less optimized due to thermal expansion of the tower, wind events, or other environmental conditions. The QLA-60EBP-10 corrects for these disturbances to maintain the highest Quality of Service available without the down time and reoccurring cost due to manual realignment. Initially align your link using a

smart phone, computer, or optional joystick. Once aligned, our software will maintain your link automatically based on an RSSI threshold setting or peaked on demand from anywhere on your network.

The QLA-60EBP-10 is typically paired with 1-2 ft side arm mount antennas, payloads up to 100 lbs (45.4 kg), and offers +/-30° of azimuth and elevation range. See the Interface Control Drawing (ICD) for details.

## TECHNICAL SPECIFICATIONS – QLA-60EBP-10

Power	Power Over Ethernet (POE) 48VDC-56VDC Supply Included
Material / Finish	Aluminum with stainless steel hardware / Hard coat anodize
Positioner Travel	
Azimuth	60° (+/-30°)
Elevation	60° (+/-30°)
Positioner Drive Rate	
Azimuth	Variable, up to 0.4°/sec no load
Elevation	Variable, up to 0.4°/sec no load
Temperature	
Operational	-22 to 140°F (-30 to 60°C)
Survival	-40 to 158°F (-40 to 70°C)
Feedback Resolution	0.01°
Backlash (Az / El)	less than 0.1° in both axes
Torque	
Operational (both axes)	50 ft-lbs (67.8 Nm)
Survival (both axes)	200 ft-lbs (271.2 Nm)
Payload	100 lbs (45.4 kg)
Dimensions	Height: 11.81" (30.0 cm), Width: 10.25" (26.0 cm), Depth*: 10.79" (27.4 cm)
Weight	40 lbs (18.1 kg)
Mounting Interface	Mounts to masts O.D. ranging from 3 - 4.5"
Antenna Mount Options	5/16-18 threaded holes for side arm mount antennas (See ICD for details)
Communication Interface	
User Interfaces	Web based hosted internal to unit, Pelco D,
Ethernet	10/100 Ethernet
Serial	RS-485


\* Depth measured from center of a 4.5 in O.D. mast

REV E

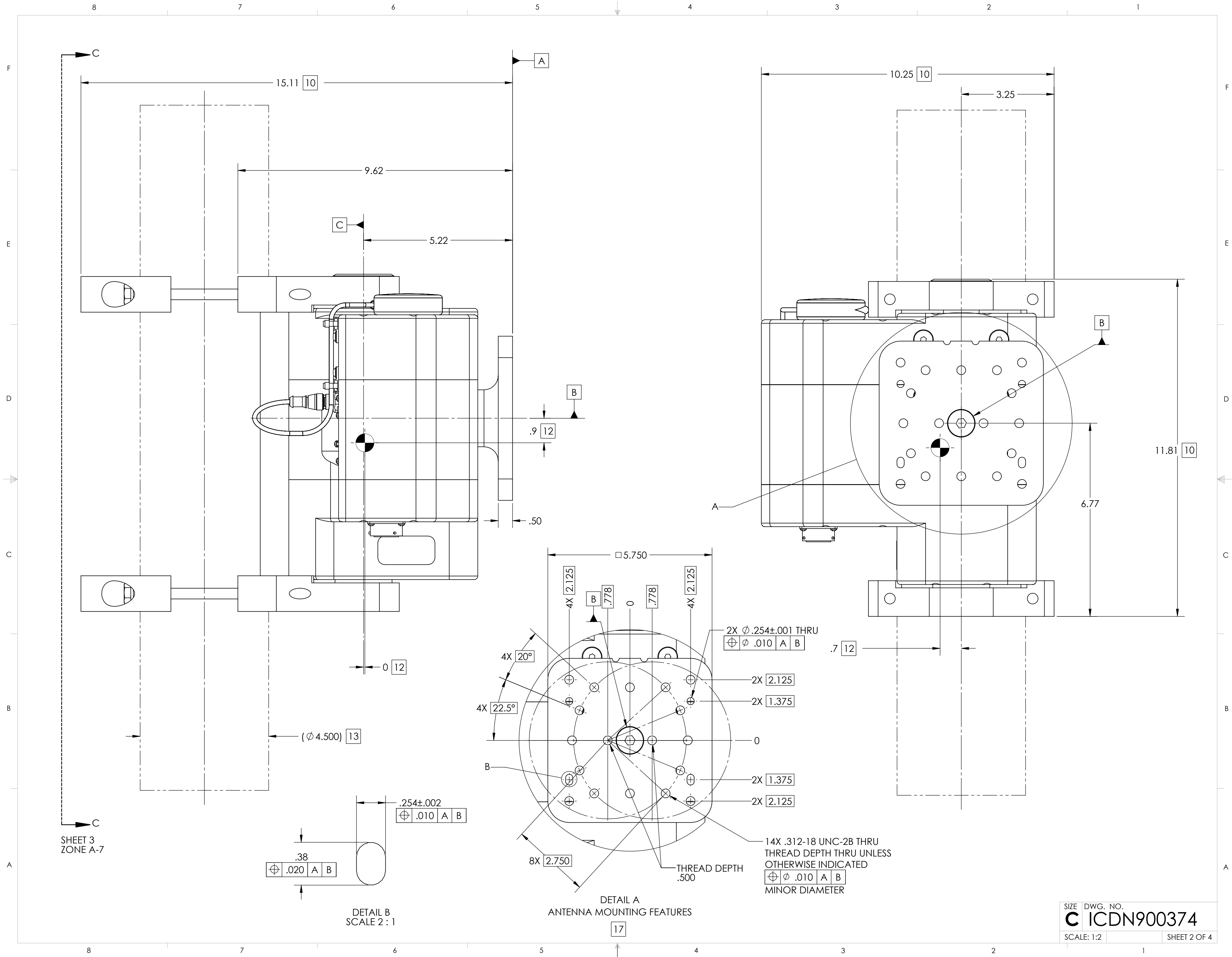
Specifications subject to change without notice

Q-PAR Antennas USA, LLC – [sales@qparusa.com](mailto:sales@qparusa.com) – Tel: 702-208-9973 – Fax: 702-208-9984

- 

<b>SYMBOL KEY</b> <div> <input type="checkbox"/> NOTE         <input type="radio"/> PL ITEMS       </div>		<b>UNLESS OTHERWISE SPECIFIED:</b>  DIMENSIONS ARE IN INCHES TOLERANCES: ANGLE $\pm .5$ DEGREES TWO PLACE DECIMAL $\pm .030$ THREE PLACE DECIMAL $\pm .010$		DRAWN S. CHEYNE 2016-04-08 CHECKED C. CHEYNE 2018-08-06 ME APPR. S. CHEYNE 2016-04-08 EE APPR.  INTERPRET DIM AND TOL PER ASME Y14.5M - 1994		<b>QPAR Antennas USA, LLC</b>  <b>TITLE:</b> LINKALIGN-60EBP-10 INTERFACE CONTROL DRAWING	
<b>PROPRIETARY AND CONFIDENTIAL</b> THE INFORMATION CONTAINED IN THIS DRAWING IS THE SOLE PROPERTY OF QPARUSA. ANY REPRODUCTION IN PART OR AS A WHOLE WITHOUT THE WRITTEN PERMISSION OF QPARUSA IS PROHIBITED.		<b>THIRD ANGLE PROJECTION</b>   DO NOT SCALE DRAWING		PART NO.  <b>SEE TABLE I</b>		SIZE DWG. NO. REV <b>C</b> ICDN900374 <b>C</b>	
QPAR ANTENNAS USA, LLC San Diego, CA 92020 www.qparusa.com				SCALE: 1:2		SHEET 1 OF 4	

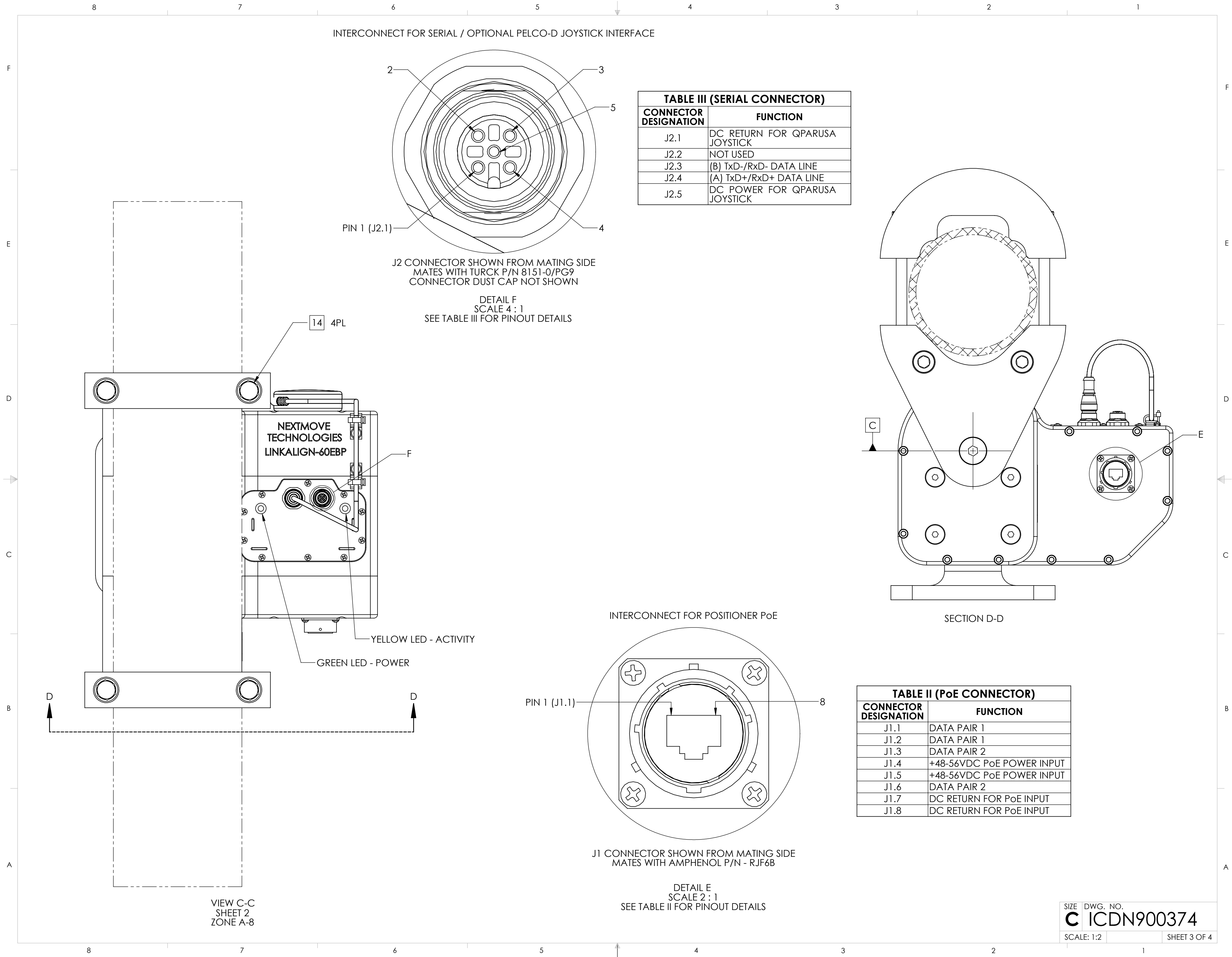
SEE TABLE I



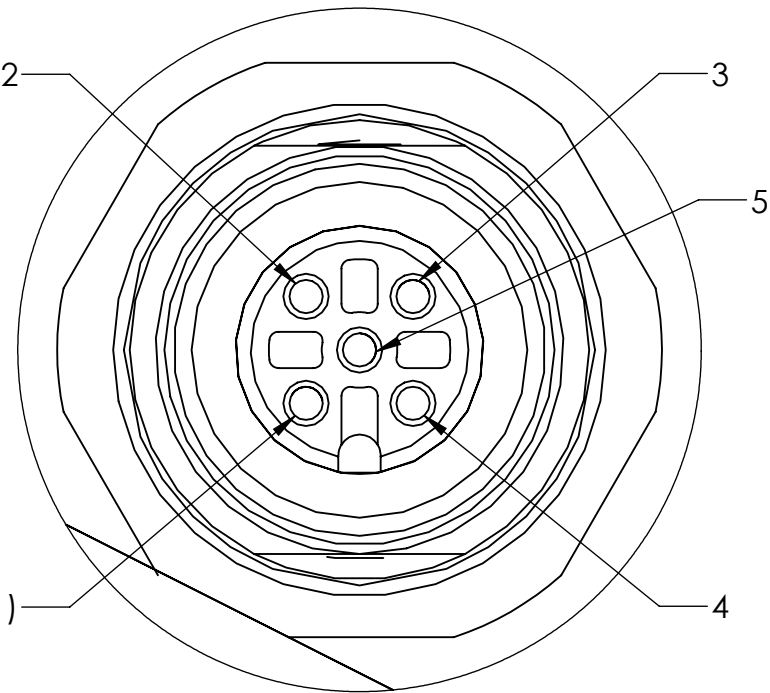
SHEET 3  
ZONE A-7

DETAIL B  
SCALE 2 : 1

DETAIL A  
ANTENNA MOUNTING FEATURES



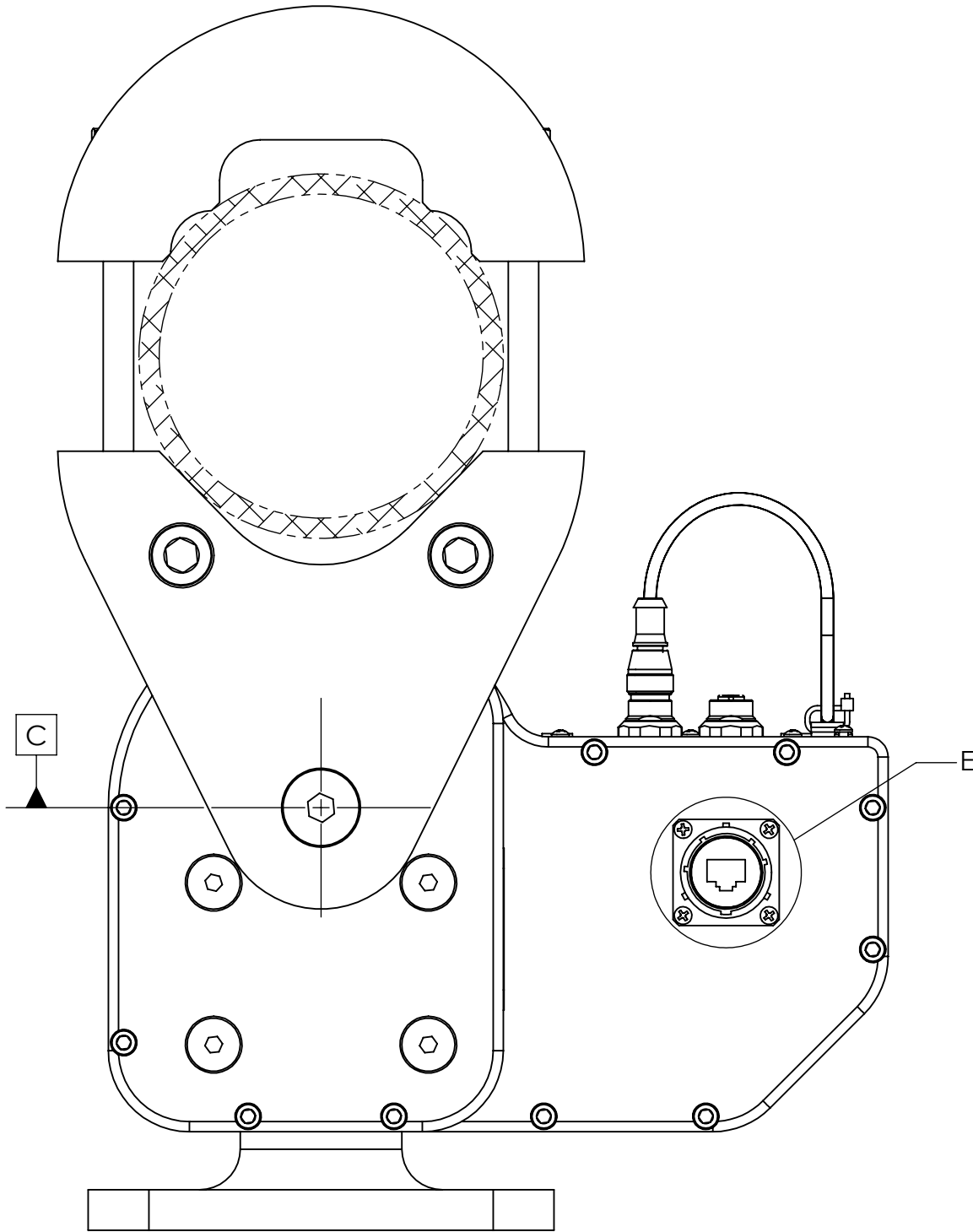
INTERCONNECT FOR SERIAL / OPTIONAL PELCO-D JOYSTICK INTERFACE



J2 CONNECTOR SHOWN FROM MATING SIDE  
MATES WITH TURCK P/N 8151-0/PG9  
CONNECTOR DUST CAP NOT SHOWN

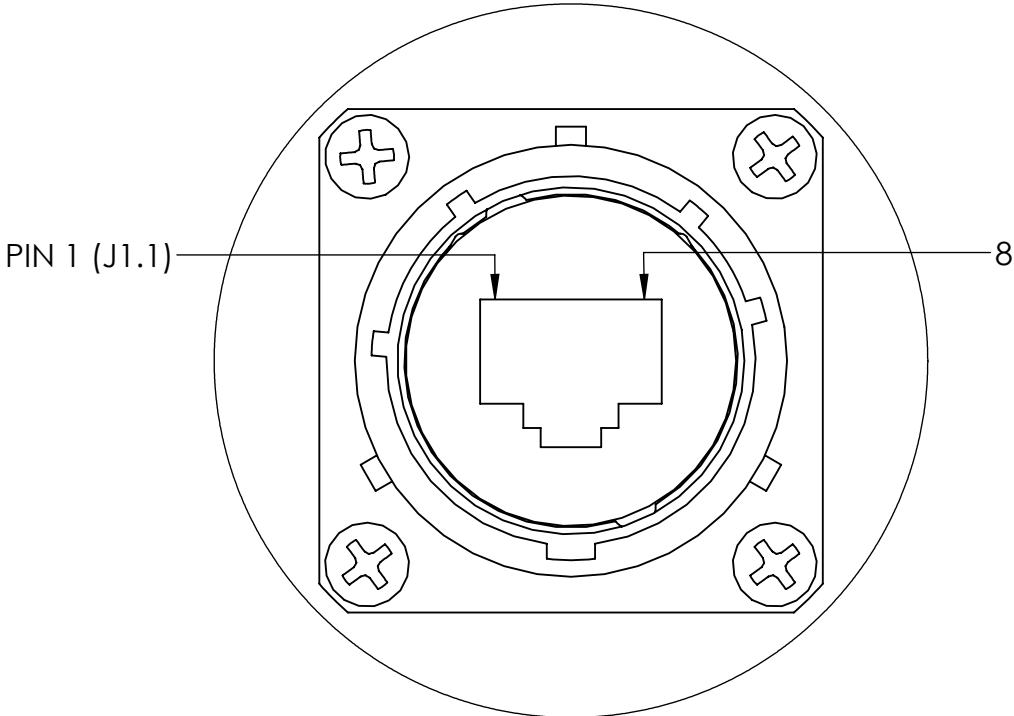
DETAIL F  
SCALE 4 : 1  
SEE TABLE III FOR PINOUT DETAILS

TABLE III (SERIAL CONNECTOR)	
CONNECTOR DESIGNATION	FUNCTION
J2.1	DC RETURN FOR QPARUSA JOYSTICK
J2.2	NOT USED
J2.3	(B) TxD-/RxD- DATA LINE
J2.4	(A) TxD+/RxD+ DATA LINE
J2.5	DC POWER FOR QPARUSA JOYSTICK



SECTION D-D

INTERCONNECT FOR POSITIONER PoE

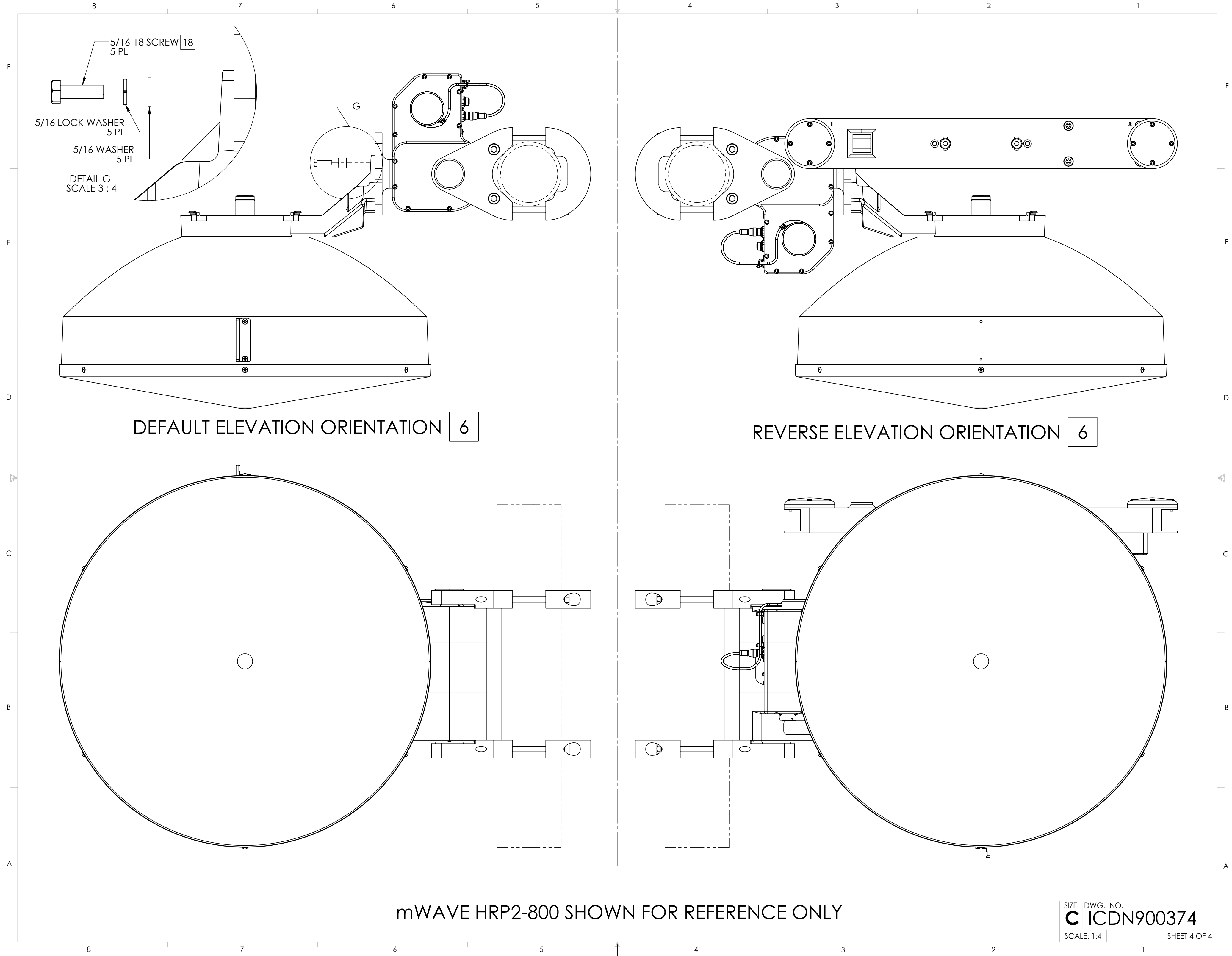


J1 CONNECTOR SHOWN FROM MATING SIDE  
MATES WITH AMPHENOL P/N - RJF6B

DETAIL E  
SCALE 2 : 1  
SEE TABLE II FOR PINOUT DETAILS

TABLE II (PoE CONNECTOR)	
CONNECTOR DESIGNATION	FUNCTION
J1.1	DATA PAIR 1
J1.2	DATA PAIR 1
J1.3	DATA PAIR 2
J1.4	+48-56VDC PoE POWER INPUT
J1.5	+48-56VDC PoE POWER INPUT
J1.6	DATA PAIR 2
J1.7	DC RETURN FOR PoE INPUT
J1.8	DC RETURN FOR PoE INPUT

VIEW C-C  
SHEET 2  
ZONE A-8



mWAVE HRP2-800 SHOWN FOR REFERENCE ONLY